

3-D TERRIBLE TERROR

ASSEMBLY INSTRUCTIONS

Time to complete: Approximately 45 Minutes Level: Medium



GETTING STARTED

Materials:

- Metal-edged ruler
- Butter knife
- Scissors or craft knife
- Cutting mat (optional)
- Multipurpose glue

*Hey kids,
make sure to ask
an adult for help!*

1 Print out pages 1-2 and allow to dry.

2 Put the pages back into the paper tray so that you can print page 3 on each back side. You'll need to print page 3 twice.

(For most printers, you will insert the printed page back into the paper tray exactly as it came out.) You may want to do a draft print first.

3 Score all the pieces: Using a ruler as a guide, run the back side of a butter knife firmly along all dashed and dotted lines.

4 Using scissors or a craft knife and cutting mat, cut out all pieces along solid lines. Don't forget to cut the slit on the body piece and head.

5 Fold all pieces along score lines, using the folding key below as a reference.

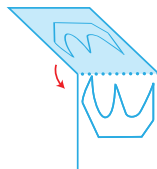
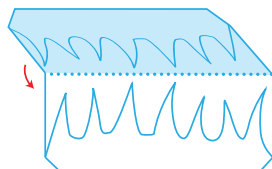
Mountain Fold



Valley Fold

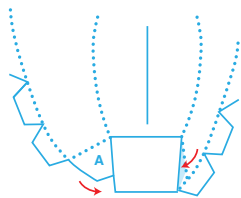


6 Fold spikes in half along dotted line and glue together. Cut out shapes along solid lines.

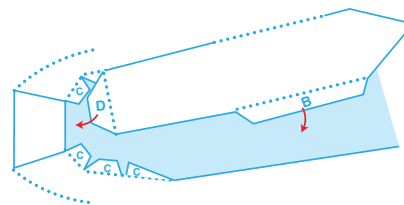


ASSEMBLE YOUR TERRIBLE TERROR

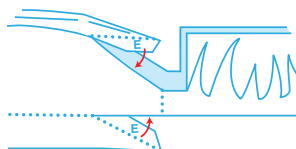
7 Body: Glue A tabs behind front panel.



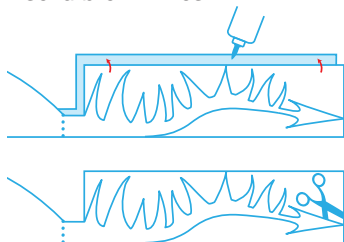
8 Body: Glue tab B to inside edge on opposite side of body. Glue C tabs to bottom of body and glue tab D behind upper edge.



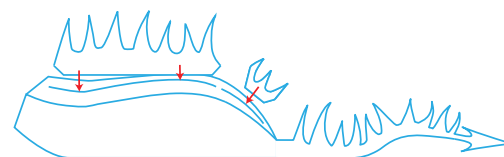
9 Body: Glue E tabs to inside edges of body.



10 Tail: Glue both tail sections together. Cut out shape along solid brown lines.

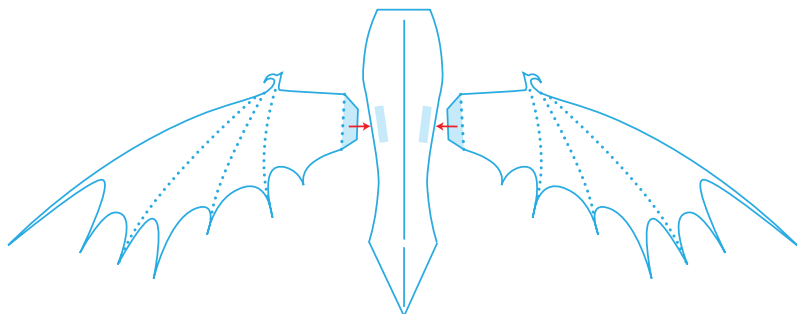


11 Spikes: Add glue to bottom of spikes and insert into slits on top of body. Pinch sides of body together until dry.

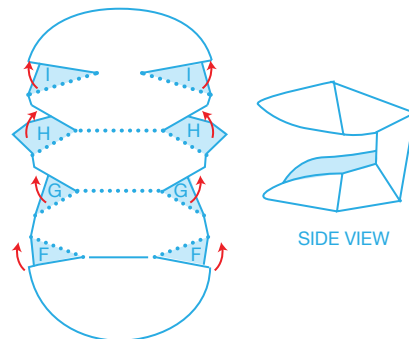


ASSEMBLY INSTRUCTIONS CONTINUED

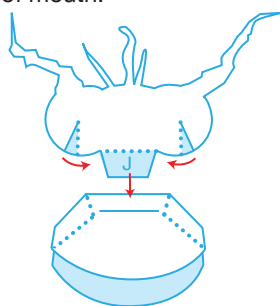
- 12** Wings: Glue tabs to green boxes on body.



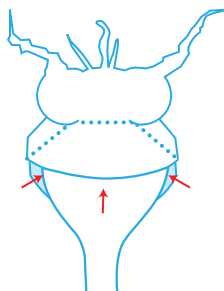
- 13** Head: Fold sides of head inward and glue to F tabs. Repeat with sets of G, H, and I tabs.



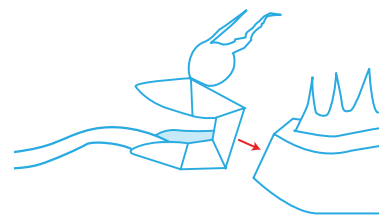
- 14** Eyes: Fold sides of eyes inward and glue to shaded areas. Insert tab J into slit on top of head, and glue to roof of mouth.



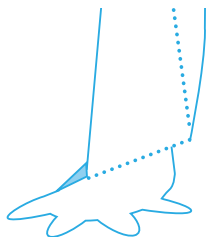
- 15** Fire tongue: Insert inside mouth and glue to bottom.



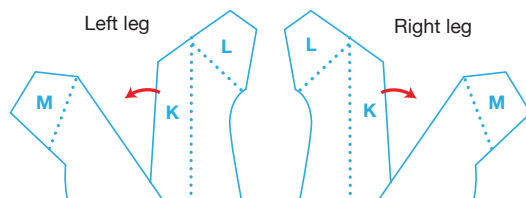
- 16** Glue head to neck of body.



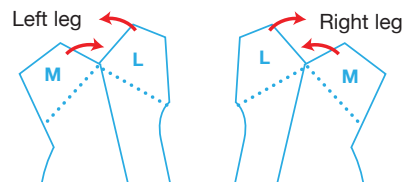
- 17** Legs: Remember to fold feet using the folding key as a reference.



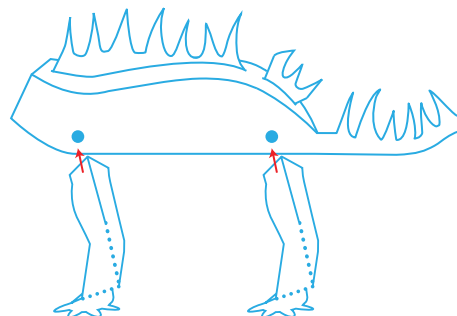
- 18** Legs: Glue tab K behind opposite edge.



- 19** Legs: Fold tabs M and L inward and glue tab L on top of tab M to create a triangle shape. Repeat steps 17-19 for all legs.

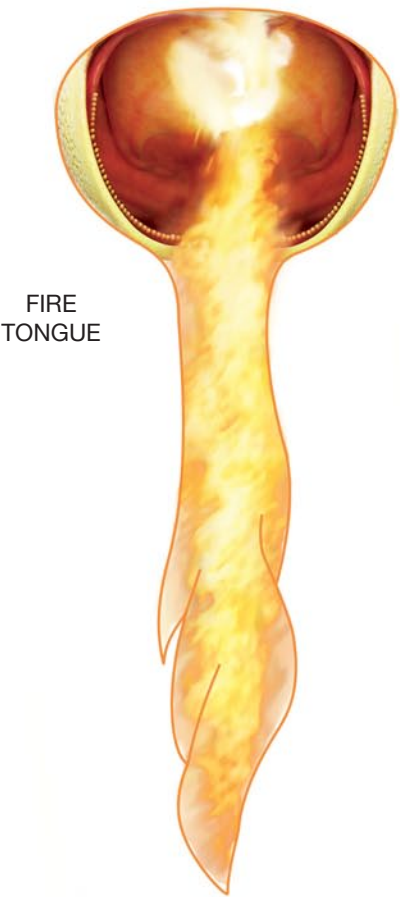
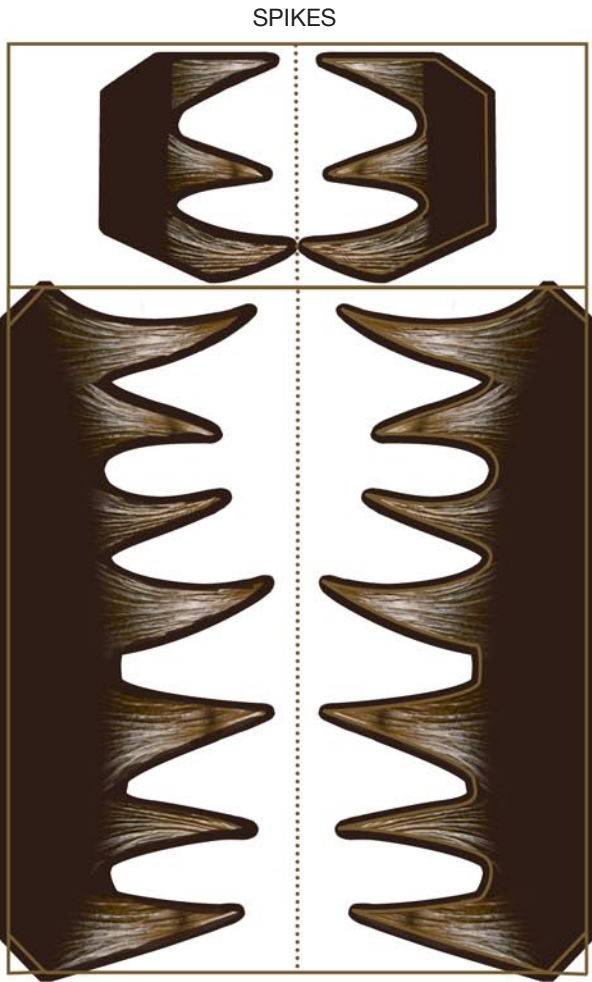
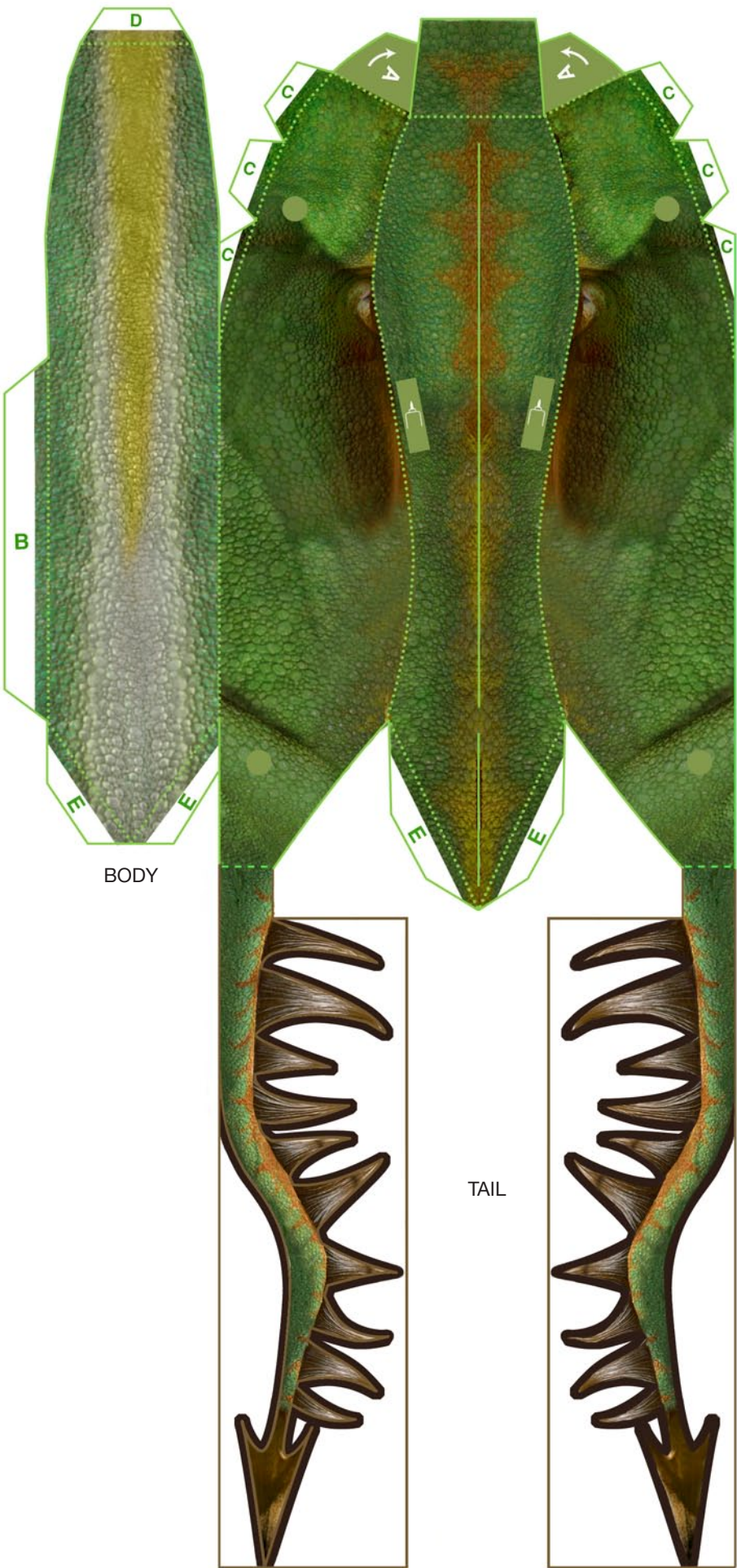


- 19** Legs: Glue triangle shape at end of each leg to dots on body.



- 20** You're done!





HOW TO TRAIN YOUR DRAGON: 3-D TERRIBLE TERROR

