

3-D NIGHT FURY

ASSEMBLY INSTRUCTIONS

Time to complete: Approximately 1 hour

Level: Medium



GETTING STARTED

Materials:

- Metal-edged ruler
- Butter knife
- Scissors or craft knife
- Cutting mat (optional)
- Multipurpose glue

*Hey kids,
make sure to ask
an adult for help!*

1 Print out pages 1-3 and allow to dry.

2 Put the pages back into the paper tray so that you can print page 4 on each back side. You'll need to print page 4 twice.

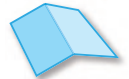
(For most printers, you will insert the printed page back into the paper tray exactly as it came out.) You may want to do a draft print first.

3 Score all the pieces: Using a ruler as a guide, run the back side of a butter knife firmly along all dashed and dotted lines.

4 Using scissors or a craft knife and cutting mat, cut out all pieces along solid lines. Don't forget to cut the slit on the body piece exactly as it came out.

5 Fold all pieces along score lines, using the folding key below as a reference.

Mountain Fold

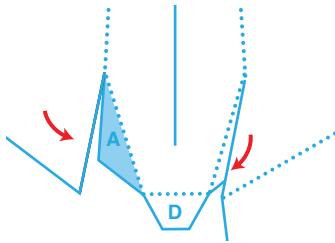


Valley Fold

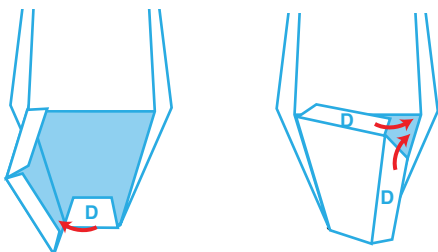


ASSEMBLE YOUR NIGHT FURY

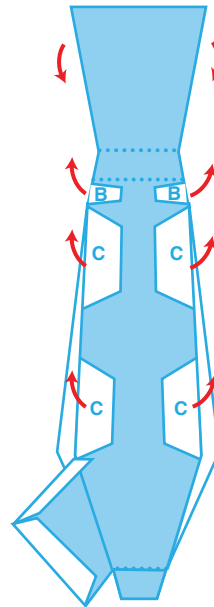
6 Body: Fold sides of body inward and glue to A tabs.



8 Body: To seal open end, glue D tabs to inside edges of body.

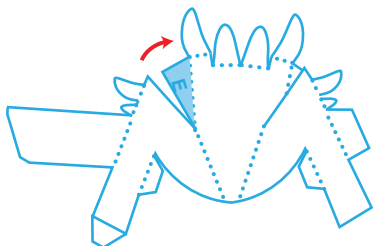


7 Body: Fold rear panel down and glue to B tabs. Next, glue panel to C tabs.

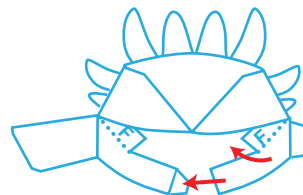


ASSEMBLY INSTRUCTIONS CONTINUED

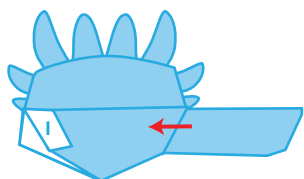
- 9** Head: Fold sides of head inward and glue to E tabs.



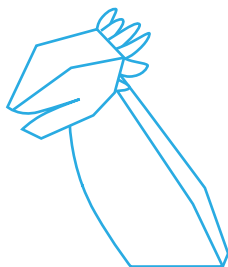
- 10** Head: Glue F tabs behind edges under eyes. To connect mouth, glue tab G to panel on other side of head.



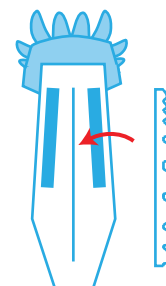
- 11** Head: Fold tab H over and glue to tab I.



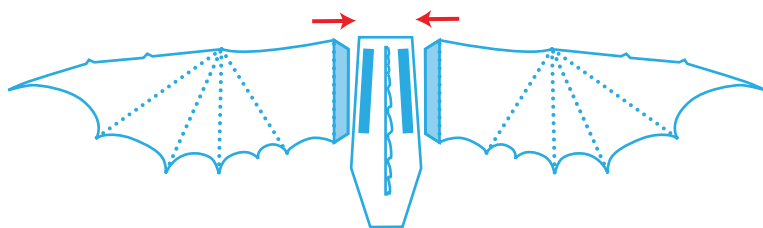
- 12** Head: Glue head to top of body.



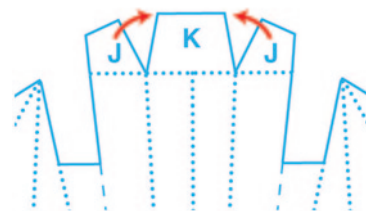
- 13** Back spikes: Fold in half along dotted line and glue together. Cut out shape along solid blue line. Insert bottom of spikes into slit on back of body.



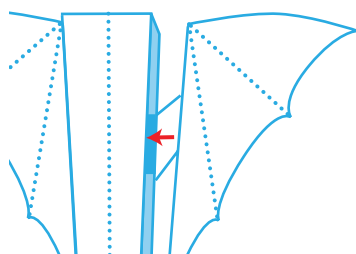
- 14** Wings: Glue tabs to blue boxes on body.



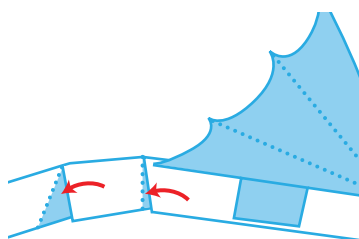
- 15** Tail: Fold J tabs inward and glue behind tab K.



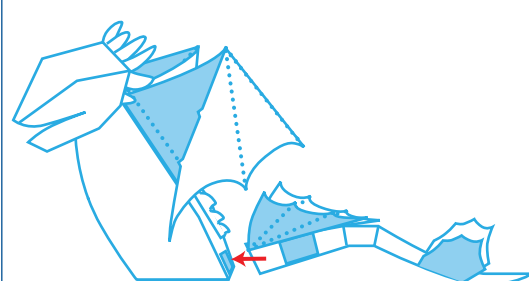
- 16** Tail: Fold L tabs upward and glue to blue boxes on tail.



- 17** Tail: To form an arch in the tail, align cut edges with edges of shaded areas and glue in place.

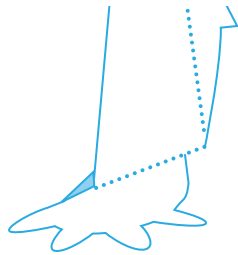


- 18** Tail: Glue end of tail to blue box on back of body.

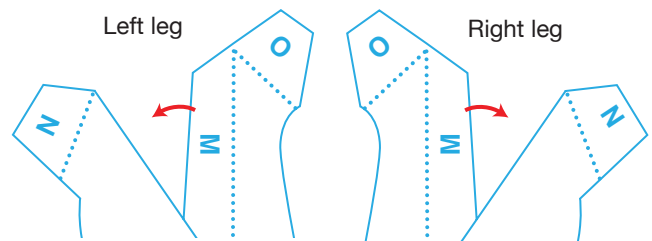


ASSEMBLY INSTRUCTIONS CONTINUED

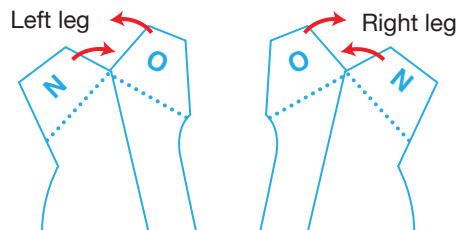
- 19** Legs: Remember to fold feet using the folding key as a reference.



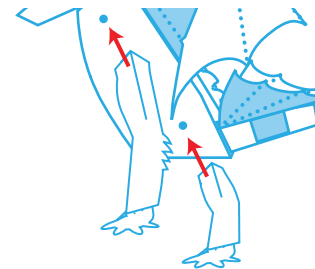
- 20** Legs: Glue tab M behind opposite edge.



- 21** Legs: Fold tabs N and O inward and glue tab O on top of tab N to create a triangle shape. Repeat steps 19-21 for all legs.



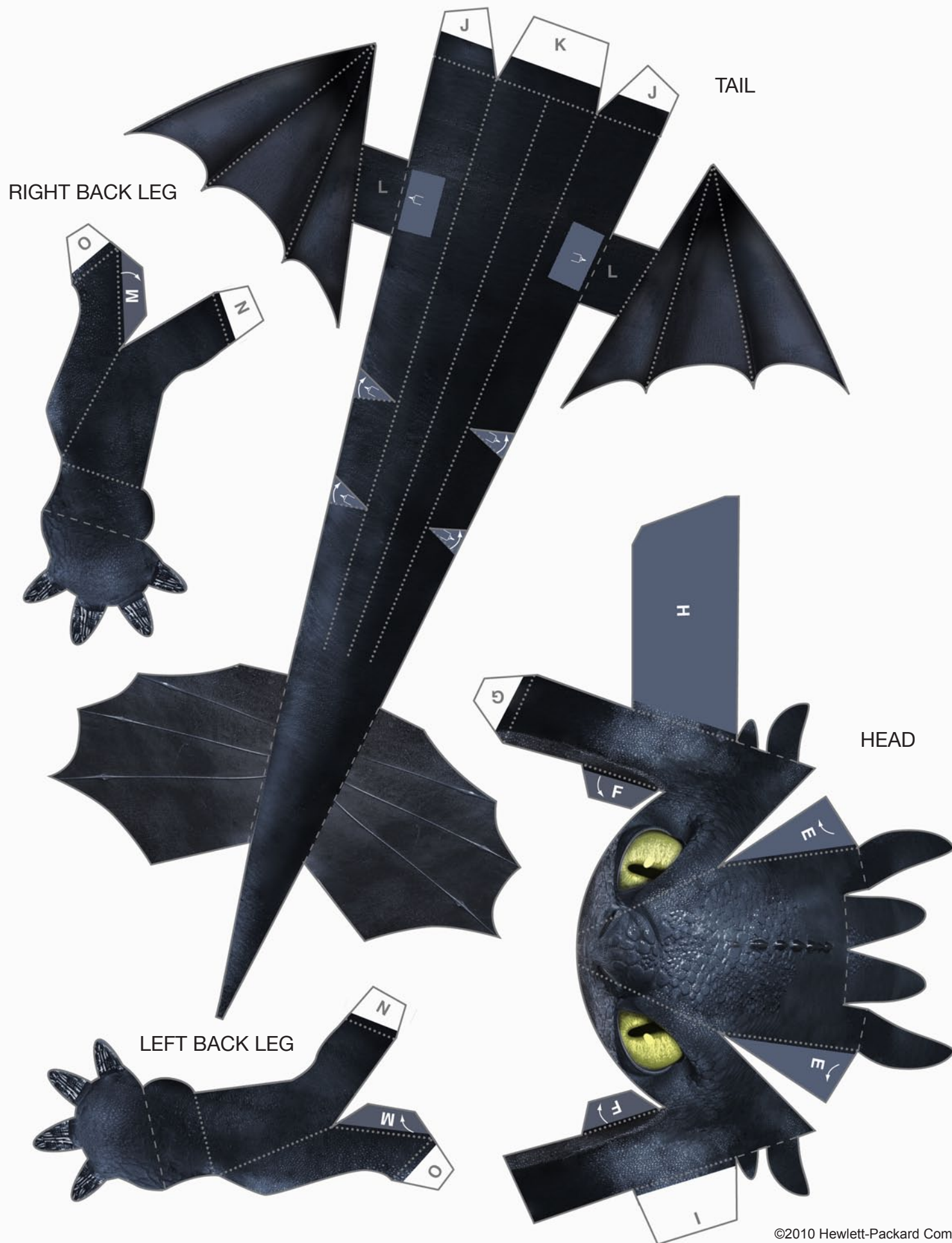
- 22** Legs: Glue triangle shape at end of each leg to dots on body. Glue longer leg pieces to dots at front of body. Glue shorter leg pieces to dots at back of body.



- 23** You're done!









WINGS

